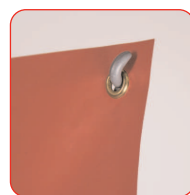


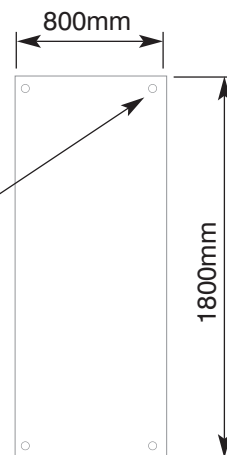
Hydro 2 is built for durability and strength and is ideal for indoor or outdoor promotions. The moulded base can be filled with either water or sand, making it especially suitable for high traffic areas indoors or poor weather conditions outdoors.

features & benefits

- Suitable for indoor or outdoor use
- Can be used as a double or single sided unit
- Ideal for point of sale, retail display or exhibitions
- Moulded plastic base for water or sand weighting
- Supported on a simple eyelet system
- Weather resistant
- Supplied with carry bag
- Designed to withstand approximate wind speeds of 10-12 miles per hour (Beaufort scale 3)



Position eyelet centres 19mm in from each graphic corner

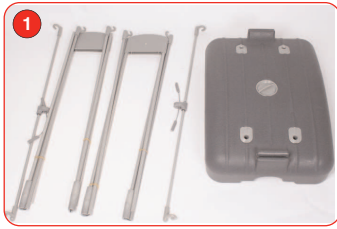


Graphic dimensions and eyelet positioning (dimensions shown are approx)



hardware specifications	graphic specifications	additional info
<p>Assembled dimensions (mm): 2135 (h) x 813 (w) x 533 (d) approx</p> <p>Base footprint dimensions (mm): 533 x 394 approx</p> <p>Weight: 7.7kg approx when empty 20.6kg approx when filled with water</p>	<p>Visible graphic dimensions: 1800 (h) x 800 (w) approx</p> <p>Recommended graphic substrate: Lightweight outdoor textiles (solid or mesh type substrates)</p> <p>Eyelets: Graphic requires 4x eyelets with a 10.5mm minimum internal eyelet diameter See above diagram for eyelet positioning</p>	<p>Included in kit: Base, support arms, graphic fixing and carry bag.</p> <p>Availability: Dark grey base, mid grey support arms</p> <p>Recommended accessories: AB120A 850 x 150mm dia banner tube (to transport graphics safely)</p>

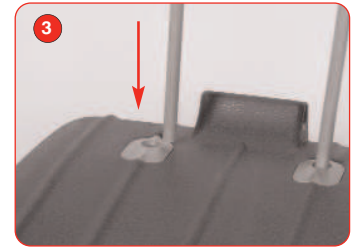
Assembly Instructions



Kit includes: Base, support arms and carry bag.



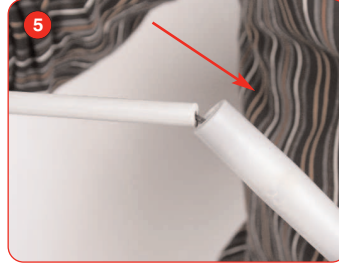
insert the graphic fixing into place by pushing the fixing into the channel on the base



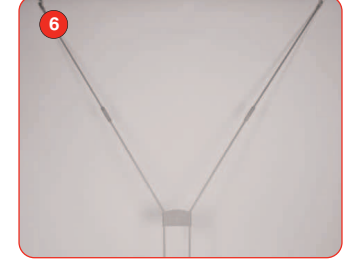
Slot the poles into the locator on the base furthest away from the graphic fixing



Assemble the top section of the poles into the locators in the middle section of the graphic support



Assemble the remaining bungee support poles.



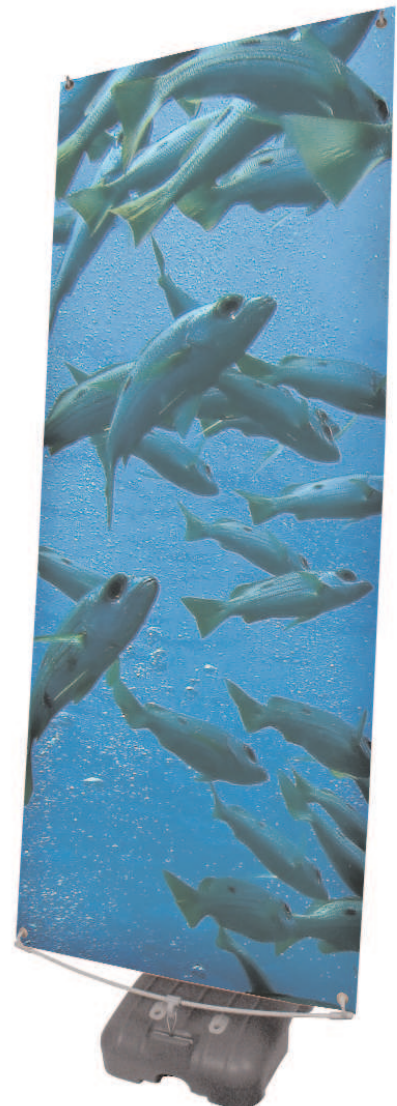
Once all the bungee poles are fully assembled the graphic can be attached



To attach the graphic align the hooks found on the graphic support with the eyelets on the graphic and attach each one.



Remove cap and fill the base with water or sand.



When using a double sided banner stand, repeat the above steps