

Zoom Quill

Very popular shape lightweight portable flag ideal for indoor or outdoor displays and events

features & benefits

- Suitable for indoor or outdoor use
- Ideal for point of sale, retail display or exhibition environments
- Overall height 4100mm approx
- Unique design allows the flag to rotate when the wind direction changes
- Quick assembly, flat packs for easy transportation
- Choice of bases to suit a range of applications and venues



Weighting ring option



Base foot



Weighting ring



Ground stake

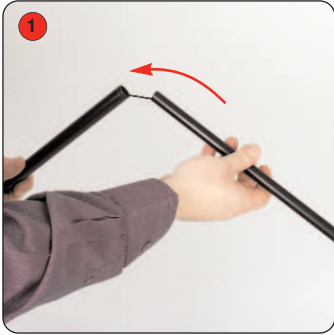


Drive-on Car foot

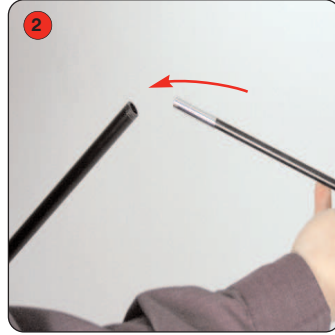
hardware specifications	graphic specifications	additional information
<p>Overall assembled dimensions: (base foot & weighting ring option) 4100mm (h) x 560mm (w) x 560mm (d) approx Weight: 7.5kg approx when filled with water</p> <p>Base foot dimensions: 560mm x 560mm approx Weight: 0.5kg approx</p> <p>Weighting ring dimensions: 470mm dia approx Weight: 0.15kg approx empty Weight: 6kg approx when filled with water Capacity: 6 litres of water approx</p> <p>Ground stake dimensions: 800mm x 120mm approx Weight: 1.5kg approx</p> <p>Drive-on car foot dimensions: 565mm x 330mm approx Weight: 1.8kg approx</p>	<p>Recommended substrate: Lightweight flag textile</p> <p>Recommended print process: Dye-sublimation print onto one side of the flag only</p> <p>Visual size & graphic dimensions: Refer to template: zoom_Quill_rev1</p> <p>A full length pocket has to be sewn into the left hand edge of the flag together with a fixing loop (see above) and please refer to the template.</p> <p>Note: The graphic template is an initial guideline only and may need dimensional adjustment dependant upon specific flag substrates used.</p>	<p>Zoom Quill flags are designed to withstand approximate windspeeds of 13 to 18 miles per hour (Beaufort Scale 4)</p> <p>Supporting poles and Base foot are supplied with carry bags. Ground Stake and Drive on-foot are <u>not</u> supplied with carry bags.</p>

Assembly Instructions

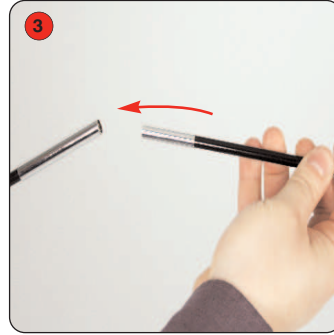
Supporting pole/flag assembly



Assemble the bungee corded poles together.



Insert the middle sized GRP rod into the bungeed poles.



Insert the smallest diameter GRP rod.



Feed the pole assembly (thinnest end first) into the flag pocket. **Warning: take care not to damage the pocket when inserting the rods/poles.** Bend the GRP rods to allow the flag to take shape.



Attach the looped fabric end of the flag to the pole clasp.



Fit the base adaptor to the assembled poles.



Base foot and weighting ring option



Open out the base foot.

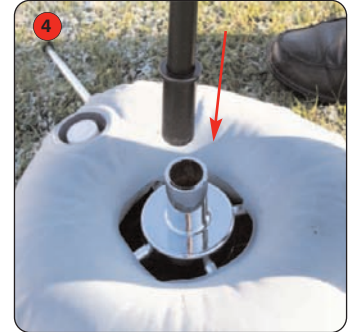


Place the base foot on the ground.



Fill the weighting ring with water (hosepipe recommended) and place over the base foot.

Warning: Do not drop the weighting ring.



Fit the supporting pole/flag assembly into the base foot.

Ground stake option



Push the the ground stake firmly into the ground.



Insert the supporting pole/flag assembly into the ground stake.

Drive-on car foot option



Drive vehicle onto the car-foot .



Insert the supporting pole/flag assembly into the car-foot