

Physique Contour

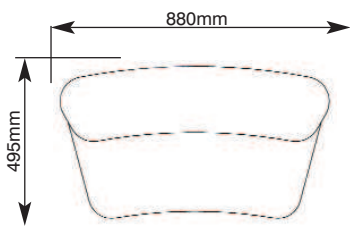
A range of stylish durable counter display units in four unique designs.



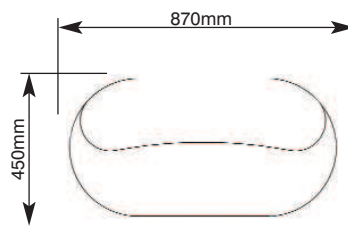
Island Pro
(Sliding lockable door is an extra cost option)

features & benefits

- Four designs: Keystone, Circuit, Island & Pebble
- Two styles: **Standard** with top, base and wrap
Pro Style top, base, wrap, internal shelf and top platform with a twist and lock fixing
- No tools assembly, units flat pack for easy transportation
- Heavy duty physique counters constructed from MDF thermoformed tops and flexible PVC tambour wrap
- PVC tambour available in silver or white (Tambour is suitable for flat bed printing)
- Tops are available in Birch, Silver or Black thermoformed finishes
- Carry bags are available as extra cost options



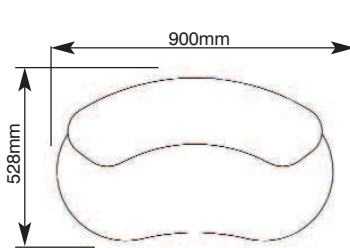
Keystone



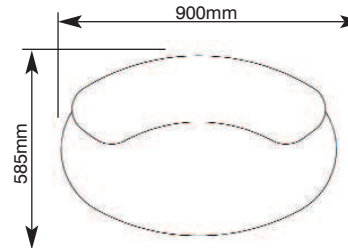
Circuit



Standard style is available in all four designs



Island



Pebble



Pro style is available in all four designs
(Sliding lockable door is an extra cost option)

(All dimensions shown are approx)

hardware specifications

Standard style units

Overall dimensions (h) x (w) x (d):
Keystone: 915mm x 880mm x 495mm
Circuit: 915mm x 870mm x 450mm
Island: 915mm x 900mm x 528mm
Pebble: 915mm x 900mm x 585mm

Pro style units

Overall dimensions (h) x (w) x (d):
Keystone: 1060mm x 880mm x 495mm
Circuit: 1060mm x 870mm x 450mm
Island: 1060mm x 900mm x 528mm
Pebble: 1060mm x 900mm x 585mm

Assembled weights

Standard style units: 11kg approx
Pro style units: 15kg approx

Wrap dimensions (h) x (w) for all styles

Main wrap: 900mm x 1705mm
Optional door wrap: 900mm x 558mm

Wrap visible areas: (h) x (w) for all styles

Main wrap: 884mm x 1705mm
Optional door wrap: 884mm x 558mm
NB 80mm width around handles is non printable

PVC tambour wrap thickness:

12mm approx

additional info

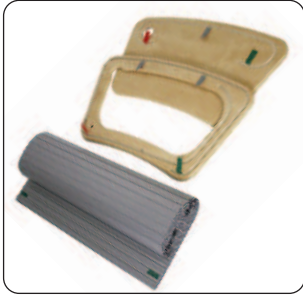
Optional accessories:

Sliding lockable door is an extra cost option for both Standard and Pro styles
Cable management ports and Internal shelves are extra cost options for Standard style units

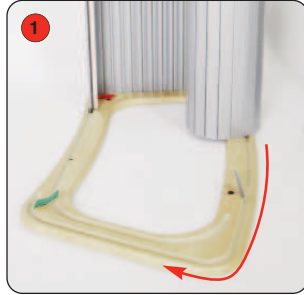
1 x AB205 Wheeled carry bag and 1 x AB206 Contour wrap carry bag are suitable for all style units

Assembly Instructions

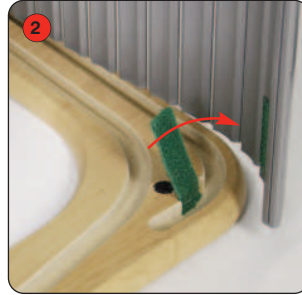
Standard style unit assembly (Applicable to all four designs)



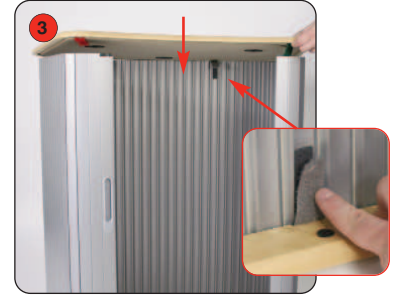
Kit includes: Base, top and PVC tambour wrap



1 Lay the base on the floor, grooves side up and slot the tambour wrap into the base.

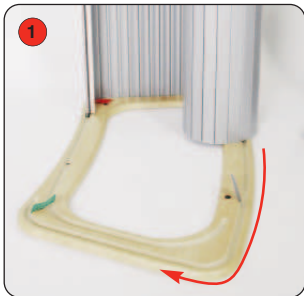


2 Secure the wrap to the base using the hook fastener tabs.

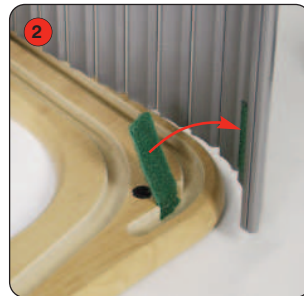


3 Lower the top onto the tambour, slotting into the groove. Secure using the hook fastener tabs.

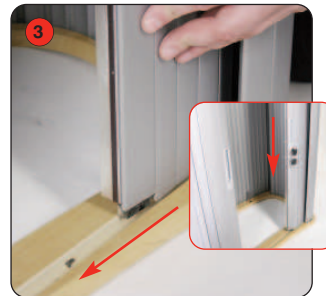
Pro style unit assembly (Applicable to all four designs)



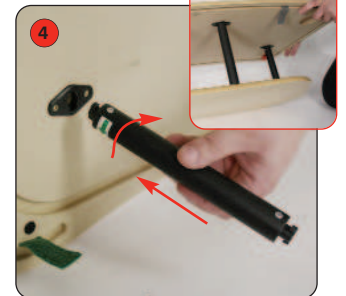
1 Lay the base on the floor, grooves side up and slot the tambour wrap into the base.



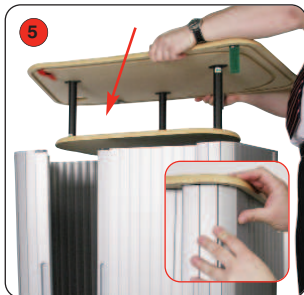
2 Secure the wrap to the base using the hook fastener tabs.



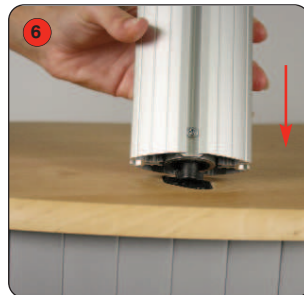
3 If applicable, slot the optional door wrap into the base groove and slide around.



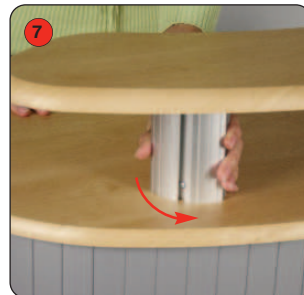
4 Attach the internal shelf to the top using 3 off twist n lock poles.



5 Lower the top and shelf inside the half built unit, slotting the tambour into top grooves. Secure the top using the hook fastener tabs



6 To attach the top shelf, place the twist and lock Linear into the locator.



7 Once the top shelf is in place simply twist the linear into place to secure shelf.